

MBR600R

State-of-the-art LED Technology

The MBR600R is a long-range rotating beacon, fitted with state-of-the-art LEDs, able to obtain a luminous range of up to 24 nautical miles.

Great reliability and availability

This equipment includes a redundant rotating system, our MRM 160 gearless and brushless double electronic rotating motor, one working as standby of the main one. This feature lends it a great reliability and availability.

Long service life

High-quality and resistant manufacturing materials, such as glass and marine aluminium, complete a watertight beacon easy to install and with minimum maintenance. All this provides an estimated lifespan of more than 25 years under the harshest marine conditions.

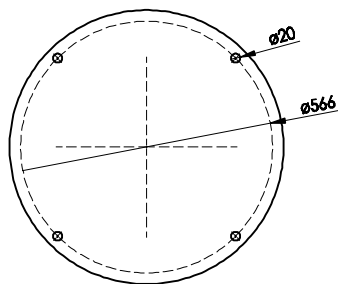
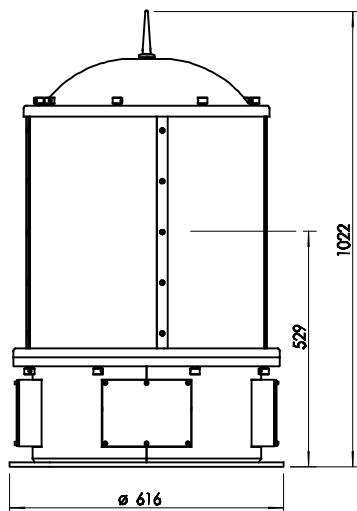
This beacon strictly meets IALA Recommendations.



FEATURES

- *State-of-the-art LED technology.*
- *Highest-efficiency luminous system.*
Up to 24 nm (T=0.74), 39 nm (T=0.85).
- *Average operation lifetime over 25 years.*
- *No lampchanger needed.*
- *Redundant rotating system made up of double electronic, gearless and brushless rotating motor.*
- *High reliability and availability.*
- *Rotating speed adjustable in situ from 1 to 6 rpm.*
- *External control unit based on microprocessor, with automatic or manual operation.*
- *Status and alarms available for remote monitoring, by opto-isolated signals and RS-232 serial port.*
- *Short-circuit, reverse-polarity, over-temperature and transient over-voltage protections.*
- *Easy access in case of maintenance or spare replacement.*

MBR600R



! Specifications subject to change without previous notice.

MBR600R

No. of levels	Stationary Intensity I ₀ (Cd)	Effective intensity I _e (Cd)								
		Rotating speed (rpm)								
		0.5	1	1.5	2	2.5	3	4	5	6
1	257,544	205,181	172,081	150,805	134,928	115,380	112,537	97,132	85,655	76,720
2	515,088	410,362	344,162	301,610	269,856	230,760	225,074	194,264	171,310	153,440
3	772,632	615,543	516,243	452,415	404,784	346,140	337,611	291,396	256,965	230,160
4	1,030,176	820,724	688,324	603,220	539,712	461,520	450,148	388,528	342,620	306,880
5	1,287,720	1,025,905	860,405	754,025	674,640	576,900	562,685	485,660	428,275	383,600
6	1,545,264	1,231,086	1,032,486	904,830	809,568	692,280	675,222	582,792	513,930	460,320
7	1,802,808	1,436,267	1,204,567	1,055,635	944,496	807,660	787,759	679,924	599,585	537,040
8	2,060,352	1,641,448	1,376,648	1,206,440	1,079,424	923,040	900,296	777,056	685,240	613,760

Optical system

Light source and Lens:	High-intensity LEDs and Fresnel lens with dioptric and catadioptric prisms.
Luminous range:	Up to 24 nm (T=0.74), 39 nm (T=0.85).
Power consumption:	Up to 72 W.
LED average life:	More than 100,000 hours.

MRM 160 double rotating motor

Type:	Double, electronic, gearless and brushless.
Regulation:	Precise balance with minimum friction.
Rotating speed:	Adjustable in situ, from 1 to 6 rpm.
Speed setting accuracy:	1.3 %.
Motor control:	Double electronic circuit.
Accessibility:	4 nos. lateral accesses.

MMC 160 external control unit

Functions:	<ul style="list-style-type: none"> · Rotation control (automatic switch-over to standby motor in case of main drive failure). · LED light source control. · Photocell control. · Remote monitoring signals.
Operating modes:	Automatic (by photocell), Manual (for maintenance) or Remote (for remote monitoring).
Voltage supply:	12 or 24 V d.c.
Remote monitoring:	<ul style="list-style-type: none"> · Status and alarms ready for remote control and monitoring, by opto-isolated signals. · RS-232 or RS-485 serial port.

Materials and environment

Lantern:	Marine aluminium, with polyurethane finishing.
Lens cover:	High-resistance glass.
Watertightness degree:	IP 66.
Humidity resistance:	100%. Pressure-compensation valve to avoid condensation.
Temperature range:	From -30° to 70°C.

Options

- Other colours available.
- A.C. power supply.
- Remote monitoring modules.
- Other specifications available under request.
- Other lighting systems available.
- MBR600L version with LED light source and Fresnel lens as an option.
- MBR600X version with xenon lamp and Fresnel lens as an option.
- MBR600HI version with halide lamp and Fresnel lens as an option.
- MBR600-S sectorised version available.

