

MBR900L

State-of-the-art LED Technology

The MBR900L is our longest-range rotating beacon, fitted with high-intensity and low-consumption LEDs luminous source. In fact, it is a compact major lighthouse, conceived to be powered by solar energy and able to obtain up to 26 nautical miles.

Compact lighthouse

This beacon is unique in the market, unmatched by any other commercial equipment. It can even replace the longest-range conventional lighthouse. This equipment includes a redundant rotating system, our MRM 160 gearless and brushless double electronic rotating motor, one working as standby of the main one. This feature lends it a great reliability and availability.

Long service life

Its genuine design, as well as high-quality and resistant manufacturing materials, provide an estimated lifespan of more than 25 years under the harshest marine conditions.

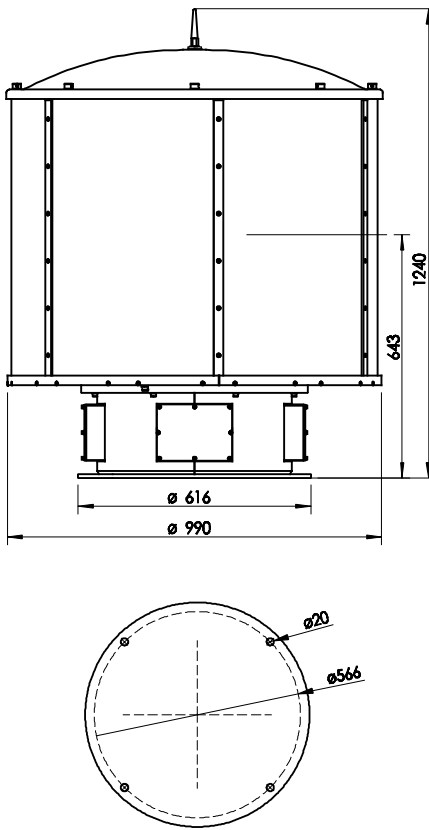
This beacon strictly meets IALA Recommendations.



FEATURES

- Compact major lighthouse, unique in the market.
- State-of-the-art LED technology.
- Highest efficiency luminous system.
Up to 26 nm ($T=0.74$), 41 nm ($T=0.85$).
- Average operation lifetime over 25 years.
- Redundant rotating system made up of double electronic, gearless and brushless rotating motor.
- High reliability and availability.
- Rotating speed adjustable in situ from 1 to 6 rpm.
- External control unit based on microprocessor, with automatic or manual operation.
- Status and alarms available for remote monitoring, by opto-isolated signals and RS-232 serial port.
- Short-circuit, reverse-polarity, over-temperature and transient over-voltage protections.
- Easy access in case of maintenance or spare replacement.

MBR900L



! Specifications subject to change without previous notice.

Optical system

Light source and Lens:	High-intensity LEDs and Fresnel lens with dioptric and catadioptric prisms.
Luminous range:	Up to 26 nm (T=0.74), 41 nm (T=0.85).
Power consumption:	Up to 80W.
LED average life:	More than 100,000 hours.

MRM 160 double rotating motor

Type:	Double, electronic, gearless and brushless.
Regulation:	Precise balance with minimum friction.
Rotating speed:	Adjustable in situ, from 1 to 6 rpm.
Speed setting accuracy:	1.3 %.
Motor control:	Double electronic circuit.
Accessibility:	4 nos. lateral accesses.

MMC 160 external control unit

Functions:	<ul style="list-style-type: none"> · Rotation control (automatic switch-over to standby motor in case of main drive failure). · LED light source control. · Photocell control. · Remote monitoring signals.
Operating modes:	Automatic (by photocell), Manual (for maintenance) or Remote (for remote monitoring).
Voltage supply:	12 or 24 V d.c.
Remote monitoring:	<ul style="list-style-type: none"> · Status and alarms ready for remote control and monitoring, by opto-isolated signals. · RS-232 or RS-485 serial port.

Materials and environment

Lantern:	Marine aluminium, with polyurethane finishing.
Lens cover:	High-resistance glass.
Watertightness degree:	IP 66.
Humidity resistance:	100%. Pressure-compensation valve to avoid condensation.
Temperature range:	From -30° to 70°C.

Options

- Other colours available.
- A.C. power supply.
- Remote monitoring modules.
- Other specifications available under request.
- MBR900R version with LED light source and Fresnel lens as an option.
- MBR900X version with xenon lamp and Fresnel lens as an option.
- MBR900HI version with halide lamp and Fresnel lens as an option.
- MBR900-S sectorised version available.

MBR900L

Version	Stationary Intensity I ₀ (Cd)	Effective Intensity I _e (Cd)							
		Rotating speed (rpm)							
		0.5	1	1.5	2	2.5	3	4	5
55 W LED	1,118,000	638,857	447,720	344,000	279,500	235,368	203,273	159,714	131,529
80 W LED	1,652,000	944,000	660,800	508,308	413,000	347,789	300,364	236,000	194,353