



## MCL360-XS

### High energy efficiency

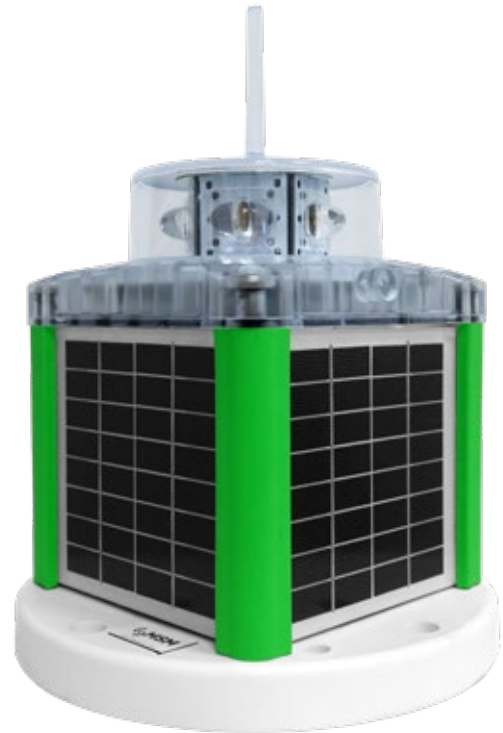
The MCL360-XS has been designed to deliver maximum energy efficiency in a compact housing. Its configuration of solar panels on all four sides, combined with a low-consumption optimized battery, ensures reliable operation even in environments with limited solar radiation. This makes it an ideal solution for fixed and floating solar installations requiring uninterrupted service under demanding conditions, without the need for high luminous ranges.

### Efficient optical system

The MCL360-XS features a high-efficiency optical system, engineered to maximize luminous output while minimizing energy consumption. Its luminous system allow for a range of up to 7 nautical miles, providing a clear and reliable signal with excellent autonomy, even in areas with low solar exposure.

### Low power consumption

Thanks to its optimized design, the MCL360-XS focuses all available energy on its essential function: signalling. This results in an autonomy of up to 400 hours without solar charging, making it an ideal choice for isolated installations of short to medium range.



## FEATURES

- High-efficiency luminous system.  
Up to 7 nm ( $T=0.74$ ).
- Vertical divergence up to  $10^\circ$  ( $50\%I_0$ ).
- $360^\circ$  horizontal output.
- Average operation lifetime over 10 years.
- Ideal self-contained lantern for energy demanding applications.
- IP 68 watertightness degree (immersion resistant).
- Programming, configuration and operating status via PC, Bluetooth or IR programmer.
- GPS synchronization module included as standard.
- Autonomy without solar charging up to 400 hours.
- RS-232 serial port for setting adjustments by PC.
- Designed according to IALA Recommendations.

## Dimensions

### MCL360-XS

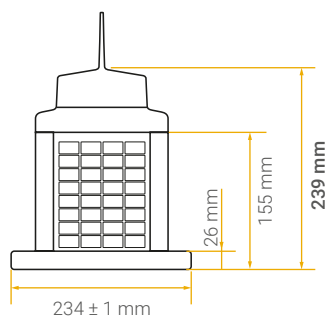
**Solar module**

2 W x 4 nos.

**Battery**

57.6 Wh / 9.6 Ah

**Autonomy without solar charging**  
up to 400 hours



## Technical features

<b>Light source:</b>	Ultra-bright LED diodes, with high-precision acrylic lenses.
<b>LED average life:</b>	More than 100,000 hours.
<b>Flash rhythms:</b>	256 rhythms (6 nos. user selectable).
<b>Vertical divergence:</b>	5°, 8° and 10°.
<b>Battery:</b>	Sealed lead-acid (SLA). Maintenance-free.
<b>On/Off Switch:</b>	External battery switch
<b>Lens cover:</b>	UV stabilised Polycarbonate. Integrated bird spike.
<b>Chasis:</b>	Anodised marine aluminium.
<b>Base:</b>	Polycarbonate.
<b>Fixings:</b>	Standard (4 - 3 bolts in a 200 mm diameter).
<b>Watertightness degree:</b>	IP 68.

## Options

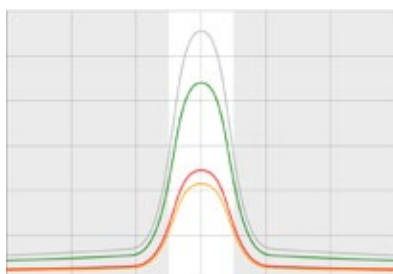
Charging port.  
Tool kit.  
Spare parts kit.  
Fixing screws Kit.  
Other fixings available.  
Other bird deterrent systems.  
Other specifications available under request.



## Peak intensities (Cd)

### MCL360-XS | Up to 7 NM

DIVERGENCE 5°



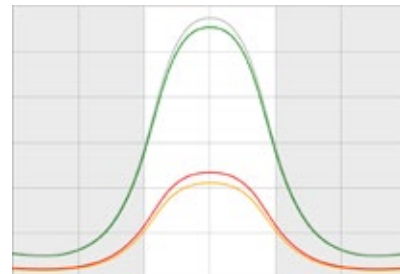
333 Cd    129 Cd  
264 Cd    147 Cd

DIVERGENCE 8°



252 Cd    88 Cd  
215 Cd    98 Cd

DIVERGENCE 10°



201 Cd    74 Cd  
194 Cd    82 Cd



Specifications subject to change without previous notice.  
Luminous ranges will be affected depending on latitude, flash rhythms and chosen options.