



GPS ANTENNA

MPRO GPS 2000



The MPRO GPS 2000 is an active receiving antenna for the 1575 MHz NAVSTAR GPS Satellite Navigational System for Maritime and Land-mobile use.

It is especially designed as the perfect complement of the MFGPS Position and Synchronisation Module.

The MPRO GPS 2000 function is to improve the GPS satellite reception signal.

Thanks to its full hemispherical coverage, it is ideal to be installed on offshore wind farms and platforms.

FEATURES

- ✓ Flat-pack GPS antenna for fixed installations.
- ✓ Full hemispherical coverage.
- ✓ Built-in high-gain, low-noise amplifier.
- ✓ Right-hand circular polarization (RHCP).
- ✓ Available in black or white.
- ✓ 3V or 5V supply voltage (12V available on request).
- ✓ DC supply via RF-connector.
- ✓ EMC tested to IEC 801 and IEC 255.
- ✓ Provided with FME (male) or TNC (female) connector.
- ✓ Wide range of FME accessories available.



GPS ANTENNA

MPRO GPS 2000



Specifications subject to change without previous notice.

Technical specifications

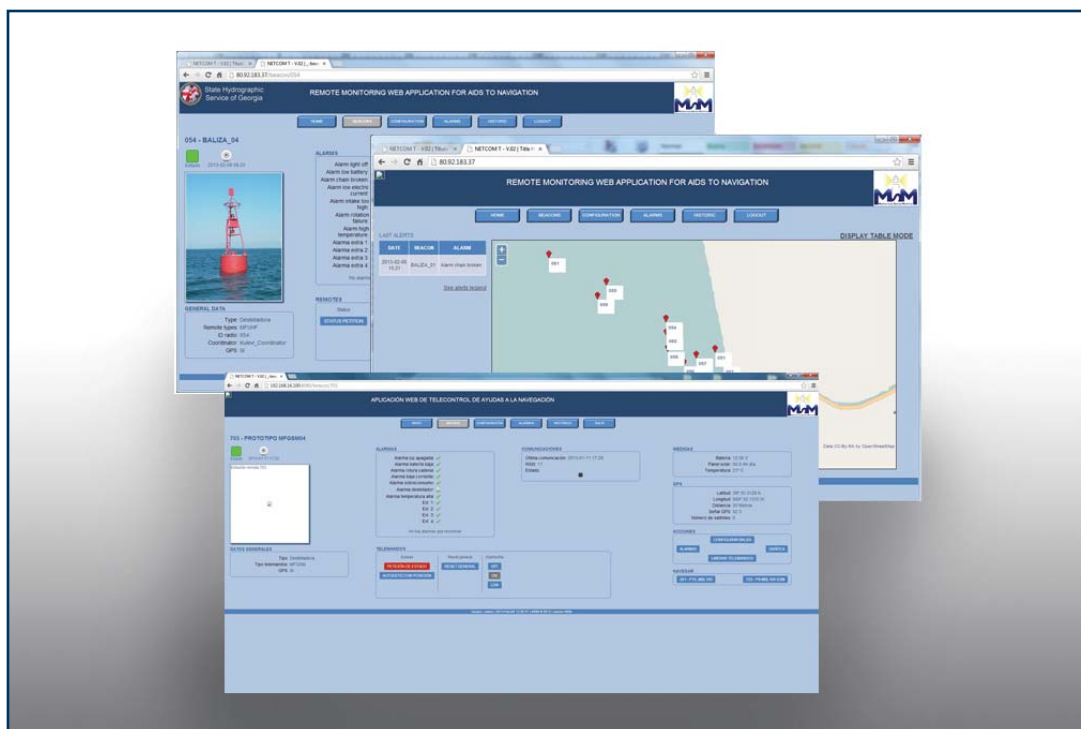
Model:	GPS 2000.
Antenna type:	Active patch antenna.
Frequency:	1575 MHz.
Impedance:	Nominal 50 Ω.
Polarization:	Circular right-hand.
Coverage:	Hemispherical.
GAIN (in axial direction):	28 dBi (typical).
Crosspolarization attenuation:	> 10 dB (typical).
Selectivity:	> 45 dB down @ ± 45 MHz.

Electronic control

Gain:	> 30 dB (typical).
Noise figure:	< 1 dB (typical).
1 dB compression point:	Approx. +7 dBm.
SWR (output):	< 2.0.
Supply voltage:	5 ± 0.5V d.c. or 3V ± 0.3V d.c. (12V available on request).
Current consumption:	Approx. 20 mA.

Mechanical specifications

Mounting:	14mm diameter hole.
Mounting thickness:	From 0.7 to 4.5 mm.
Colour:	Black or white.
Temperature range:	From -50° to +70°C.
Connector:	FME (male) or TNC (female).
Recommended installation torque:	8.5 ± 1 Nm.
Height:	16 mm.
Outer height:	26.5 mm total (FME) 38 mm total (TNC).
Width/length:	Ø 55 mm.
Weight:	Approx. 120 g.



MEDITERRÁNEO SEÑALES MARÍTIMAS, S.L.L.
 mesemar@mesemar.com • www.mesemar.com

